

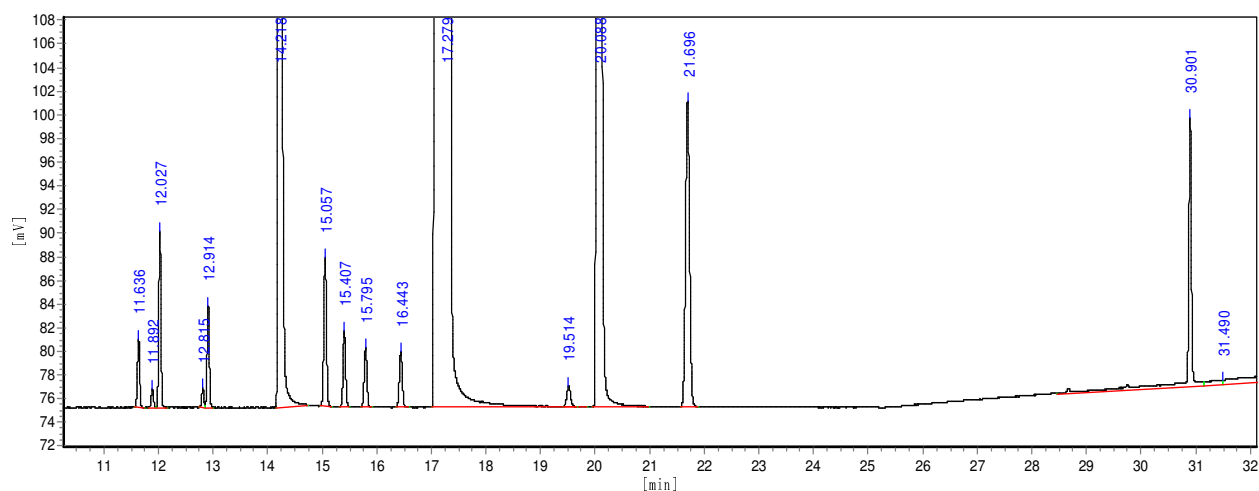
# GsBP GC COLUMN

## TEST PERFORMANCE SUMMARY

### Column Information

### Test Conditions

<b>Catalog No.:</b>	0125-5A10	<b>Oven Temp.:</b>	TP	<b>Injector:</b>	S/S, 275 °C
<b>Serial No.:</b>	11041373	<b>Carrier Gas</b>	Hydrogen	<b>Detector:</b>	FID, 325 °C
<b>Stationary Phase:</b>	GsBP-1	<b>Head Pressure:</b>	30PSI	<b>Injection:</b>	10UL GAS
<b>Column Length:</b>	150M	<b>Split Flow:</b>	80ml/min	<b>Holdup Tin</b>	11.7(min)
<b>Column ID:</b>	0.25mm	<b>TP:</b>	40C 25MIN 15C/MIN		
<b>Film Thickness:</b>	1.0um		TO 200C (1MIN)		



Peak No.	Compound	Retention Time (min)	Partition Ratio (k')	Theoretical Plates/m	Resolution
1	Methane	11.636	0	2499	
2	Ethylene	11.892	0.022	2941	1.98
3	Ethane	12.027	0.034	3172	
4	Propylene	12.815	0.101	3483	1.45
5	Propane	12.914	0.11	3427	
6	Methanol	14.218	0.222	2014	
7	i-Butane	15.057	0.294	3328	
8	n-Butane	15.407	0.324	3327	
9	1-Butene	15.795	0.357	3387	
10	t-Butene	15.795	0.357	3387	
11	c-Butene	16.443	0.413	3256	
12	Ethanol	17.279	0.485	227	
13	i-Pentane	19.514	0.677	2826	
14	2-Propanol	20.088	0.726	2612	
15	n-Pentane	21.696	0.865	3006	
16	n-Hexane	30.901	1.656	16707	

